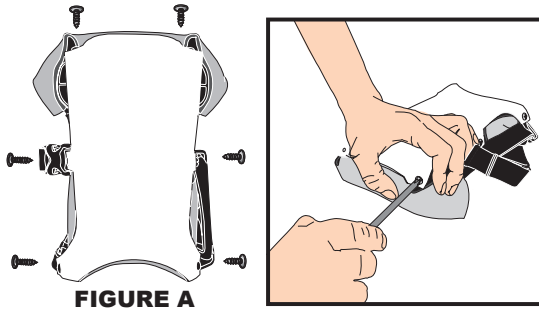


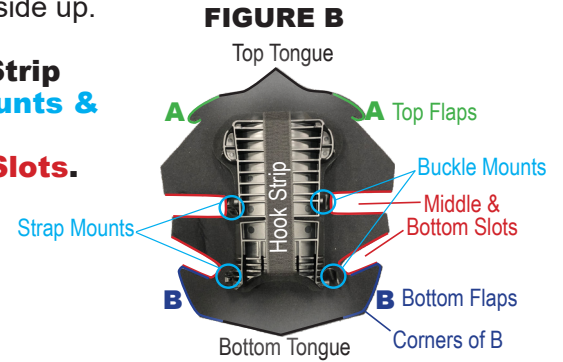
PRO KNEE® AP16®

REPLACING TUCKED IN NO WRINKLE LINER

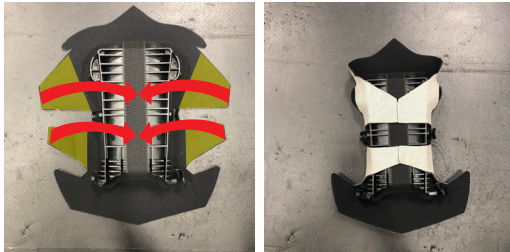
1 Remove Rubber Boot by unscrewing the 6 screws shown in Figure A. Remove old liner.



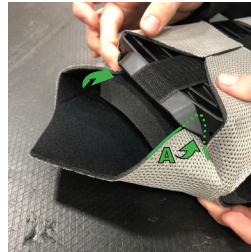
2 Lay new liner down black side up. Center frame as **FIGURE B** (Cushion side down/ **Hook Strip** side up) so that **Buckle Mounts & Strap Mounts** align with **Middle Slots & Bottom Slots**.



3 Attach the **4 flaps** of liner to the **Hook Strip** at the center of the frame. Tuck liner underneath straps (if needed).



4a Tuck **Top Flaps A** between top of frame & Cushion Insert.



4b Push liner down over width of Cushion Insert.



4c Tightly fold **Top Tongue** of liner to the top of **Hook Strip** at the center of the frame.



5a Tuck **Bottom Flaps B** between bottom of frame & Cushion Insert.



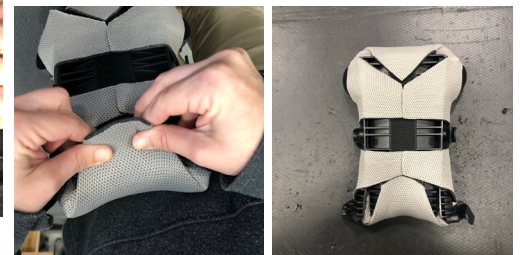
5b Position **Corners of B** with edge of Cushion Insert (frame-side).



5c Push liner down over width of Cushion Insert.



5d Tightly fold **Bottom Tongue** of liner to the bottom of **Hook Strip** at the center of the frame.



6 Reattach Rubber Boot with screws.

